

Rotokauri School Newsletter



Issue No: 12

15 August 2013

KIDS FOR KIDS CONCERT

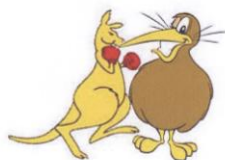
Thirty three of our students represented Rotokauri School at the Kids for Kids concert on Tuesday, 6th August. As per usual they were a real credit to our school. To get the students to perform to such a high level required students to attend numerous practices over the last two terms. Suzanne Miller and Karlene Owsley have spent hours working with the Tuis to bring them up to a public performance level.

On behalf of all the community I would like to thank Suzanne and Karlene for inspiring our students to be the best they can be.



The annual Rotokauri Tuis concert is on its way! The whole school community is invited to this special evening where the children will showcase the songs they have learned this year and perform special group parts and solos. It's a great night out; even if your child is not performing, come along and enjoy watching your child's classmates. Check out our invitation for details!

Land Down Under



and upside Down

Giddy Mate!

**Shall we go on a Tiki tour across the ditch and upside down?
Let the Rotokauri Tuis take you on a fun-filled ride to explore some
culture and very memorable songs from over the years.**

**At the Te Kowhai Hall, Horotiu Road, Te Kowhai
Friday, 13th September, 2013 at 6.30 pm
Entry by Donation**

ROKOKAURI SCHOOL
462 Rotokauri Road
R D 9
HAMILTON 3289

Telephone (07) 849 5068
Fax (07) 849 4371

Email: sverstraten@rotokauri.school.nz

Dear Parents

Nga mihi o te wa kia koe me to whanau.

ROKOKAURI SCHOOL MISSION STATEMENT

Our positive environment will actively engage our students in learning.

ROKOKAURI SCHOOL VISION

We are responsible, confident learners and communicators.

ROKOKAURI SCHOOL VALUES

Respect, Responsibility, Honesty, Persistence and Excellence.

PERSISTENCE

Each term we focus on a new value, without losing sight of our other values. This term's value will be PERSISTENCE. It's interesting because persistence is the hardest of our values to explain to our students, as it is not a word used frequently in everyday language. When we teach our students about values it's important to actually try and describe the acts or attitudes that we are looking for.

Students who show persistence at our school will show the following traits:

1. They always keep trying.
2. They learn from their mistakes.
3. They practise to reach their goals.

ATTENDANCE

Each year, through our student management system, we track our student's attendance rates. Attendance at school has been a major focus of the Ministry of Education over the last 3 years. Anybody with the slightest bit of common sense would understand that if a child is not at school then they simply cannot learn at the same rate as their classmates who are attending.

Poor attendance impacts on student performance and achievement and therefore could limit a child's vocational choices in the future. We have over 40 students at our school who have 100% attendance over the first two terms of this year. In Term 1 we had an average of 96% attendance at our school. In term 2 we had an attendance rate of 94%, which is understandable as winter flus and colds kick in. Parents of students who have attendance rates that are low or have a number of unjustified absences will be called to explain, as sending students to school is a legal requirement.

I have published research in the past that shows a strong correlation between student attendance and student achievement. Poor attendance can often start when parents

condone the odd day off here and there. What these parents are saying to their children is that they do not value education. Children role model off their parents and this can lead to negative attitudes towards schooling which can be hard to change.

REFERENCES AND REPORTING FOR HIGH SCHOOLS

At this time of the year our senior students and their parents are making decisions about the High Schools they would like to attend in 2014. After the High School has been notified (by the parent) that they would like their child to attend, they then send out a special reporting card to our school which we fill out and send directly back to the school. Some of the parents of our senior students may not be aware of this as some of you are asking for a brand new report to be produced by the staff at Rotokauri School to send to the High Schools. If a particular High School requests a report from us then we would send them the last report that was written on the child.

In terms of writing references they tend to be provided for students who are applying to get into private schools because there is competition to get into these schools. If a child is applying for a balloted position then a reference is not required because legally names have to be drawn out of a hat randomly, in a supervised process.

ABSENTEE CALLS

If your child is sick can you please make sure that you ring the office as soon as possible in the morning. Please give your child's name, classroom and the reason why your child is away.

STUDENT FEEDBACK

Research tells us that feedback to students is the single most important thing to do in terms of improving achievement. Below is an article from Dylan William, a UK researcher, about Embedded Formative Assessment.

He says there are three ways of giving feedback on students work:

1. Give students a score.
2. Give students constructive feedback such as specific comments on errors, suggestions on how to improve, and at least one positive remark.
3. Giving students constructive feedback and a score.

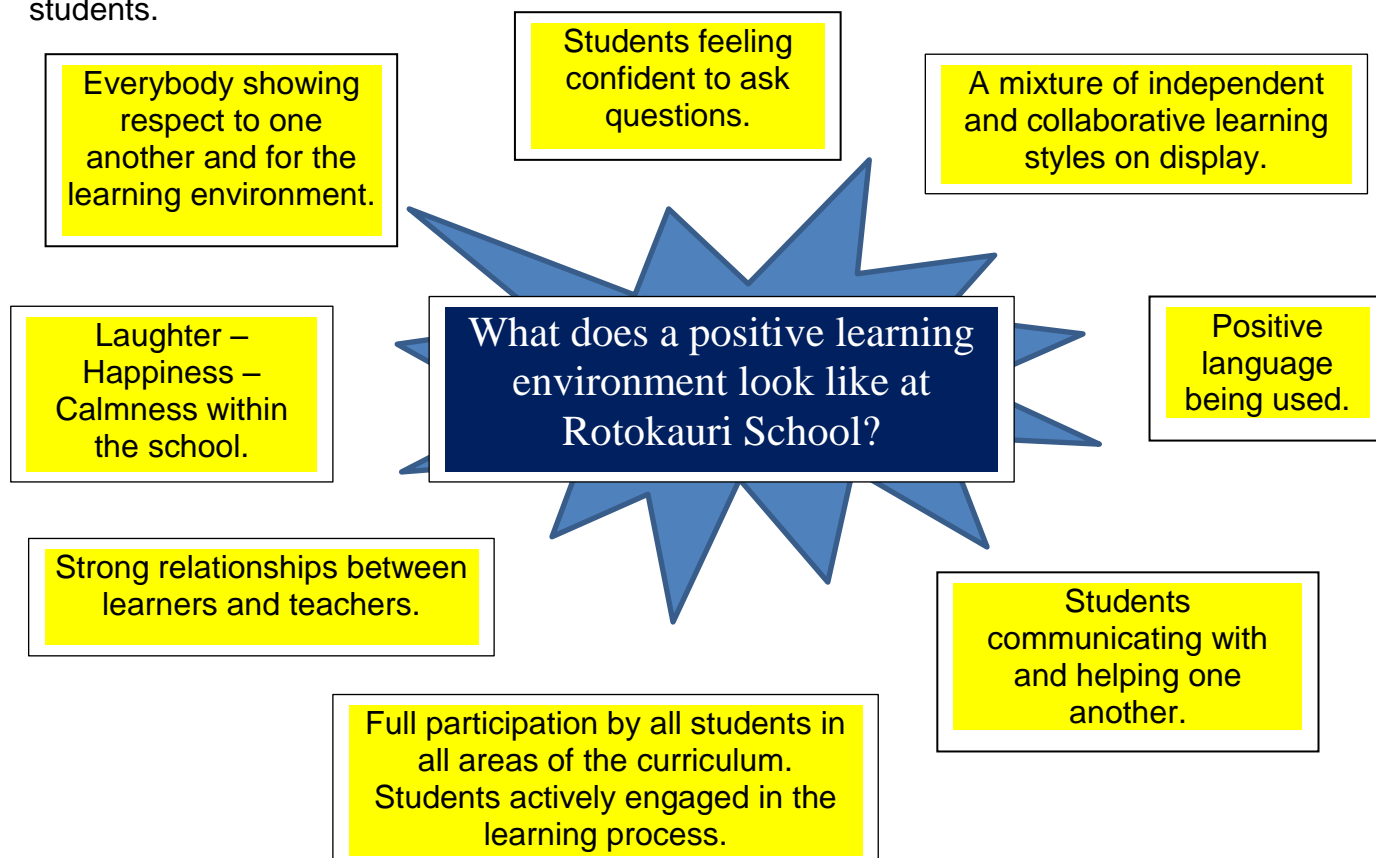
Students in the second group learned twice as fast as those in the first. But students in the third group made no progress. Those with the highest scores felt no need to read the comments and those with the lowest scores didn't want to read the comments. The score was all they were interested in.

DAFFODIL DAY – 30 AUGUST 2013

Daffodil Day is the Cancer Society's annual appeal and one of the most important fundraising campaigns across New Zealand. We would like to encourage students to bring along a gold coin donation on Friday 30th August. We will hold a special assembly so that classes can add their contribution to our coin trail. This has been an appeal that the school has supported for a number of years. Please give generously.

STUDENT CONSULTATION

Although the student consultation process had many positive findings we still felt there were too many students who answered “don’t know”. This made the staff think that the terminology used in the student survey needed to be reflected on. Maybe the students were unsure about what engaged looked like or what a confident learner should look and act like. In the latter part of Term 2 we had discussions with our students and staff and designed some diagrams that reflected our united beliefs on a range of topics. Each newsletter during this term will reflect on the conversations we had with our staff and students.



FURTHER TECHNOLOGY ADVANCES

The Board of Trustees, in the last couple of years, have invested a lot of money into technology. It is by far the biggest spending component of the budget, other than personnel. The old Board and the new Board see this as real investment in the future of our students.

In further moves to enhance, engage and enable our students to be confident collaborative learners the Board have leased a new server to replace our old one which no longer supported the rapid advances in IT.

The Board has also hired Spike to develop and host a new website for our school. Some months back we asked the community what they would like on the website. Your ideas were passed onto Spike as part of the tendering process.

We have also bought new visualizers for Rooms 2 and 3, along with an iPad for the new students in Room 8. Over the next couple of months more equipment will be sourced to support our students growing IT skills. In the coming weeks, through this newsletter, we would like to share with you educational websites and apps.

SWIM SAFE

Swim Safe will be taking place for all Rotokauri students in Week 7 - September 9th to 13th. I cannot stress enough the importance of this course for the safety and well-being of our students. There's no getting away from it - New Zealanders love the water and although we would all like to think that we are all capable swimmers the statistics show the opposite. The following makes for sad reading but drowning through a simple set of skills can be made avoidable:

- During the summer months one New Zealander will drown every three days.
- In the last 2 years 225 New Zealanders have drowned.
- Men make up 90% of all drownings in New Zealand.
- New Zealanders are twice as likely to drown than Australians.

Swim Safe is a New Zealand programme that teaches students survival skills. It is very specific to the sort of water environments and situations that our children will find themselves in.

This water safety package has been put together at a cost of \$20 per student, including transportation for the 4 sessions. We would ask that all money is paid in advance of the students departing on Monday, 9th September.

Remember parents are welcome to come and watch this programme but the pool rules require that you are charged a \$2 entry fee.

CAR SHOW AND COUNTRY FAIR POSTER COMPETITION

Never underestimate what students can achieve, especially when it involves students using computers.

We are giving our Year 4 - 8 students the opportunity to participate in a school Car Show and Country Fair Poster Competition. First prize will be \$30, second prize will be \$20 and third prize will be \$10.

As with all competitions there is judging criteria:

- The poster must grab the reader's attention.
- Information stated on the poster must be correct.
- Information must be clearly set out.
- The poster must have our main sponsor West Hamilton Refinishers on it.

All posters need to be brought to Mr Goodson's office by Friday, 23rd August.

STUDENT COUNCIL REVIEW

The Student Council will be putting together their own school review over the coming weeks. The major focus of the review is on student happiness and the student's ability to learn. We look forward to sharing this information with you at a later date.

SPEECH COMPETITION

Our School Vision states that we are confident learners and communicators. Therefore we teach our students about the importance of speech writing and delivery. Over the coming weeks many of our classes will be writing and delivering speeches in preparation for our school speech finals on Thursday, 22nd August. Parents are welcome to join us then. From our speech finals a group will be selected to represent our school at the Te Uku Interschool Speech Competition to be held at Te Uku School on the 28th August.

E MAILS AND PHONE NUMBERS

We thank all those parents who have given the school their email address. We feel that emailing parents brings closer communication between the school and family and this in turn must be beneficial for student achievement.

We realise that parents often change cell phone numbers but it is important that the school is notified of any changes. Over the next few weeks we are looking into group texting which would be invaluable if we had a major incident and the school needed to contact all of our parents.

MATHLETICS

We have only received positive feedback in regards to Mathletics from our students, staff and community. Some parents have taken the opportunity to buy the online programme now. This costs \$99 per child if you do it this way. But when we do it as a school next year our collective buying power will mean that you have to pay no more than \$20 per child for the whole year. The school will subsidise the cost for each student by \$10.00.

RELIGIOUS INSTRUCTION

Religious instruction in its current format, taught by Churches Education Commission, has been in New Zealand Schools since 1973. Currently over 730 State Primary Schools are involved in this programme

The programme in schools has very much moved with the times and is closely linked to The New Zealand Curriculum through values, key competencies and learning outcomes, which in the teaching profession we call WALT = We Are Learning To.

Here is an example of what a series of lessons may look like:

VALUES

1. Community and Participation
2. Tolerance, community and participation
3. Respect and Friendship
4. Excellence

WALT

- = Get to know people better
- = Be kind to others
- = Talk honestly with friends
- = That we are special

Some of these values you will recognise from our classroom posters. In many cases the teachers of Religious Instruction are supporting what we are hoping to achieve with our students. For more information regarding Religious Instruction feel free to pick up a pamphlet which can be found on the table outside Sharon's office.

SAYINGS

- Stereotypes don't require evidence they only require a lazy mind. (Ellis Cose)
- Apologising doesn't always mean you are wrong.... Sometimes it means you value your relationships more than your ego. (unknown)
- Students don't learn in a vacuum. Higher knowledge is built on prior knowledge. (Susan Sandler and Zaretta Hammond)

TEAM PHOTOS

Team photos will be taken on Tuesday, 3 September. Envelopes are coming home soon to those children that have been in a team / group this year. If you do not get an envelope but feel you should have, please contact the office.

AGRICULTURAL DAY – 23 OCTOBER 2013

Our annual Agricultural Day is coming up quickly. If you are entering an animal please bring your entry forms to the school office. **The final close off for entries will be the last day of Term 3, Friday, 27 September. Chicken entries are due back by Monday, 23 September.**

AGRICULTURAL DAY – HELPERS NEEDED

To make this day run smoothly we are totally reliant on volunteers. Below is a list of jobs we need help with. If you can spare a few hours of your time it would be really appreciated. Please see Sharon in the school office if you can help.

Stewards x 3 - to assist the calf, kid and lamb judges by organising the children with their animals, writing down the judges results and tying ribbons on the animals.

Flower Show Scribe x 2 – to assist the judges by writing the certificates once judging is complete.

AGRICULTURAL DAY – TRAINING TO BE A JUDGE

If you have an interest in Agricultural Day and would like to train to be an Associate then Judge please contact Susan on gmandsltobin@xtra.co.nz

AGRICULTURAL DAY – TROPHY RETURN

If you were awarded a trophy at last year's Agricultural Day, please return it to school as soon as possible ready for this year's prize giving.

IDEAS TO PRINCIPAL

We are all lucky that we belong to such a special school. But rather than being content with what we have we should always be striving for improvements that will make a real difference to our students.

Last year, as part of a think tank concept, I asked our teachers to think of ideas that they could put into practice that would make Rotokauri a special place. This year I would like to ask the community to put ideas forward.

If you were the Principal, what would you change that would have the biggest impact on the students learning or happiness?

Email: mgoodson@rotokauri.school.nz

TICKETS ON SALE NOW AT THE SCHOOL OFFICE

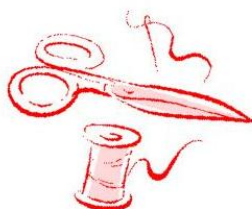
Rotokauri School Wearable Arts Shows

Friday 20th September 2013

Join our students for an evening of inspirational designs with the theme



"this is me"



** Drinks and snacks on sale *
* Raffles, Silent Auctions & Spot prizes **

Show Times: 6.30pm-7.30pm Juniors (Rooms 1,2,3,8)

7.45pm-9.00pm Seniors (Rooms 4,5,6,7)

Admission Prices: Adults: \$3 for 1 show or \$5 for both shows.

Children (15 and under): Gold coin.

Tickets on sale from 2nd September 2013 at the school office

Shows kindly sponsored by:

**Kip
McGrath**
EDUCATION CENTRES

**Kip McGrath Professional Teaching for
Yr1-13 in maths and English. Ph 8482262**

Pacesetter (Cuff family)

Pumice (Ladbrook family)

Prizes kindly donated by:

Quilt Raffle - Jane Hurford * Rotokauri Lake Artwork - Heather Perring

**Would you like your name or business name here too?*

Please contact Jo Campbell to discuss how you can help - paintcampbell@xtra.co.nz or phone 8499193.

P.T.A. CHOCOLATE FUNDRAISER

The Chocolate fundraiser is now over. Thank you for all your support whether selling or returning chocolates quickly and letting us know you didn't want them. It has gone very smoothly thanks to everyone's help - you are a great T.E.A.M. The Caulfield family did an outstanding job selling chocolates this year, they are on their 5th box. Well done!

If you have discovered you have got money or chocolates to come in, bring them to the office today or tomorrow please. The draw for the prizes will be at Tuesday's assembly. Good luck.

STALLS FOR THE ROTOKAURI COUNTRY FAIR AND CAR SHOW, 10 NOVEMBER 2013

This year the Car Show is also having a Country Fair.

The PTA is looking for craft type stalls to be there on the day. We only have limited space for these stalls so we wanted to give Rotokauri School families the first opportunity to book a spot.

The cost is only \$30.00 for the day so if you or someone you know has a business or hobby that would like the opportunity to have a stall please contact me (Hayley Yorke) on hndyorke@xtra.co.nz ASAP as we will soon be putting this opportunity out to stall holders at local markets.

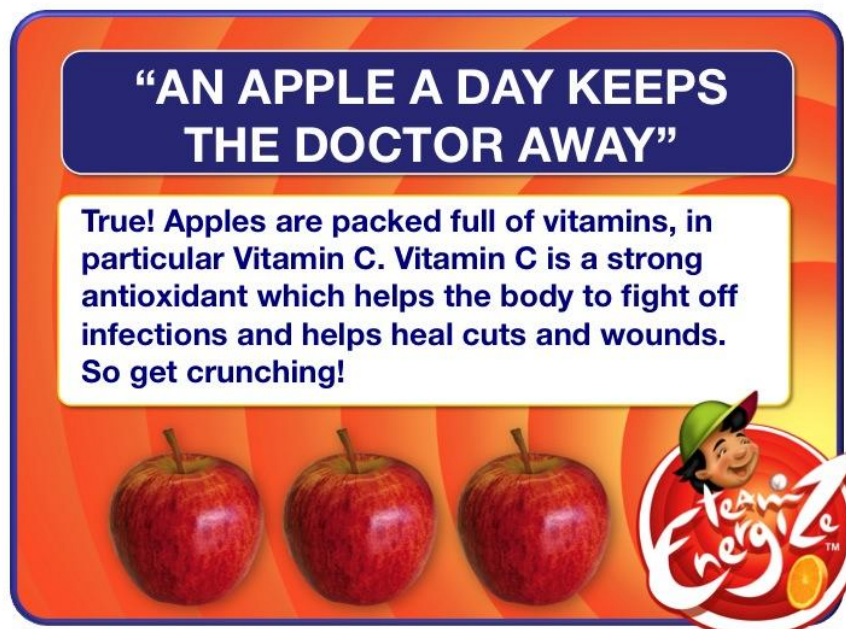
PLEASE **NO** FOOD STALLS AT ALL AS THE SCHOOL CHILDREN HAVE GOT THAT SIDE OF THINGS COVERED - THANK YOU.

FEES OWING

Please remember to pay the following to the school office:

- Religious Instruction fee per year - \$5.00 per child
- Photocopying fee per year - \$4.00 per child
- Room 2 – Newspaper in Education fee - \$3.00
- Year 7 & 8 students only – Technology Fee \$100.00 per student per year.

Thank you to the parents who have paid their fees already. ☺



HEARING AND VISION CHECKS IN SCHOOL

Hearing and vision testing will take place on 19th August. Please read the information below.

Hearing and vision checks in school

The objective of the vision is to identify previously undetected hearing and vision defects.



Which children are routinely checked?

- Catch up screening for children who have not completed hearing and vision checks as part of their B4 school check.
- Children absent from previous visit, require re-tests or follow up.
- In special circumstances, parents, teachers or others may request a hearing or vision check.
- New immigrants.

What tests are carried out?

Ears

- Audiometry – hearing test
- Tympanometry – middle ear function test (only carried out when hearing test is not within a normal range).

Eyes

- Long distance vision tests – not a complete visual examination, but a simple screening test.
- Colour vision tests (Year 7 boys only).


NB All these checks are non-invasive, safe and should cause no discomfort.

The Vision Hearing Technician will:

- Notify parents of all test results.
- Enter results on Ministry of Education data base (ENROL).

The Vision Hearing Technician will obtain personal details from the school i.e. names, dates of birth, ethnicity. If the technician needs to contact parents or caregivers following the visit, addresses and phone numbers will also be required. Community services may share this information with other health professionals involved in the children's care.

If any parent or caregiver does not want their child to be checked, or their child is currently under specialist care for a hearing or vision defect, they should let the technician know by leaving a message with the school.




Making your world
Beautiful

129 Commerce Street
Frankton, Hamilton
New Zealand

(07) 847 5718

floristilene@gmail.com
www.floristilene.co.nz



Magnolia wanted

I am looking for magnolia for my shop, if anyone has a tree and wouldn't mind me giving it a good trim could you please let me know on
0274 303 844

Thanks
Marie Carlson

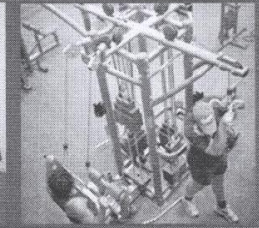
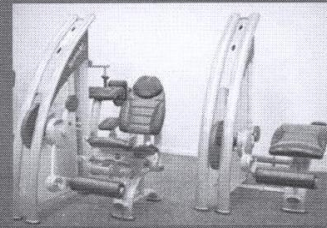
Don't forget we offer a 10% discount to the
Rotokauri community

**“SPORTS DRINKS
MAKE YOU RUN FASTER”**

False. Sports drinks are designed for elite athletes to help with recovery from demanding training and during competitions. Sports drinks can contain approx 14tsp sugar per bottle. Children do not need sports drinks to assist them in their sports, tap water is the best drink to keep us hydrated and help us perform better!



Discounted Gym Memberships available to ROKOKAURI SCHOOL PARENTS & STAFF



\$14.80 per week
Normally **\$17.80pw**

- Over 160 free carparks
- Free use of over 100 gyms throughout NZ
- 24 hour use
- Group exercise classes

- Discounted membership
- Subsidised personal training when you join
- REPs certified staff and facility (independently audited annually)

To book a tour
contact Sherryn
07 849 6775 or 027 504 2070
sherryn@firstplacefitness.co.nz

**First Place
FITNESS CLUB**

24 HOUR GYM

Sponsors of the

Rotokauri School Coromandel Fishing Tournament



WEST HAMILTON
AUTO REFINISHERS

JASON CAMPBELL

PANEL & PAINT

127 COLOMBO ST.
FRANKTON

P. 07 957 2415
F. 07 957 2416
M. 029 957 2415
E. whar_dsl@clear.net.nz



Southworth
Consulting Limited
Gilbert Southworth

SOUTHWORTH CONSULTING LTD
p 07 8380011 f 07 8380021 m 021 473660
P O Box 15114 Dinsdale
1148 Victoria Street
Hamilton 3243
e gilbert@southworth.co.nz



NARELLAN | POOLS NZ

www.npnz.co.nz

Freephone 0508 4 POOLS

(76657)



Bright Property Solutions Ltd

Your "can do" handyman option

Kevin Bright


Repairs and Maintenance

40a Gibson Road, Dinsdale, Hamilton 3204

Mobile 027-3049517

Phone 07-8463227

Kevinbright1@gmail.com



hoof
WINTER SALE

up to 60% off selected styles
sale runs until September 2, 2013

www.hoof.co.nz